



FLEMINGTON STATION

AVAILABLE SPACE:

- 15,945 SF in four (4) buildings
 - 4,436 SF Building A (Partial Leased - 3400 SF Avail.)
 - 2,164 SF Building B
 - 5,545 SF Building C (Partial Leased - 1200 SF Avail.)
 - 3,800 SF Building D (Leased)
- (Unit Sizes from 900 SF and up)

AMENITIES

- ✓ Adjacent to Flemington's Liberty Village and Turntable Junction outlet centers
- ✓ 45 miles from NYC or Philadelphia
- ✓ Just off the Flemington Circle, Routes 31 & 202
- ✓ Neighboring tenants include: Anne Klein, Lancome, Nautica, Polo Ralph Lauren, Brooks Bros., JCrew, Michael Kors, Tommy Hilfiger and L.L. Bean

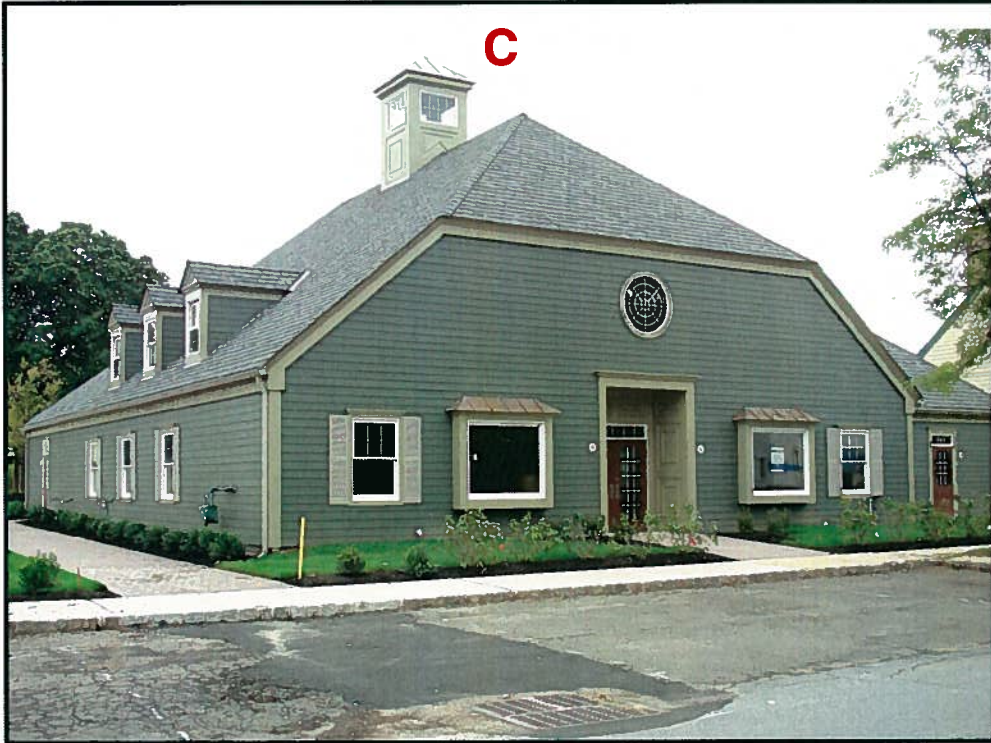
A



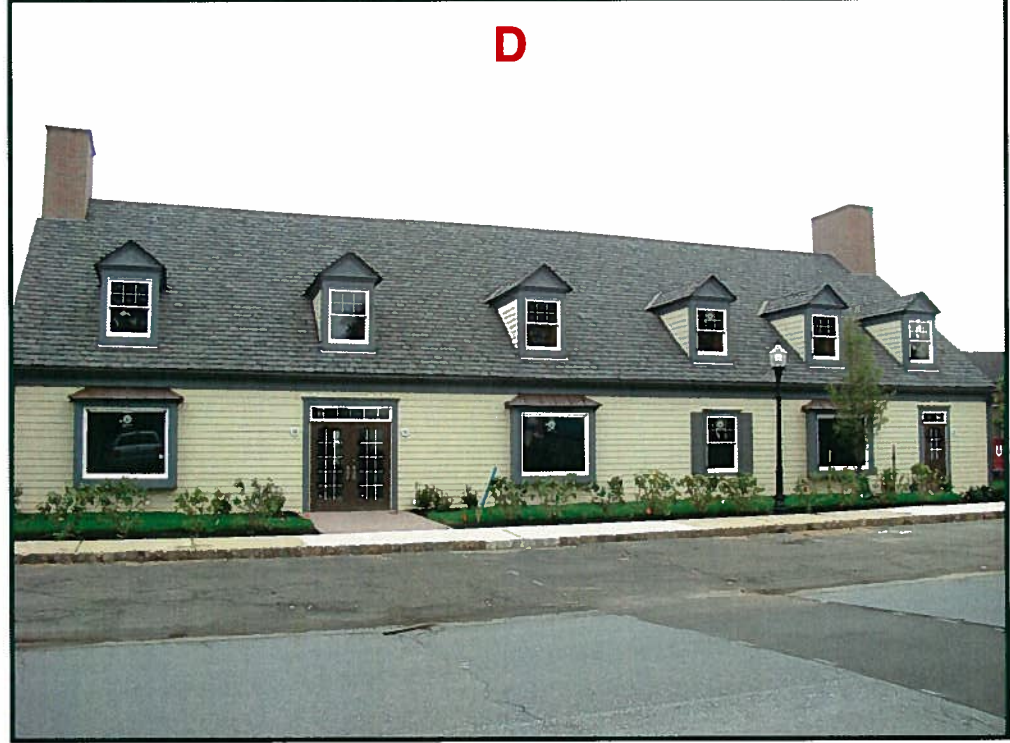
B

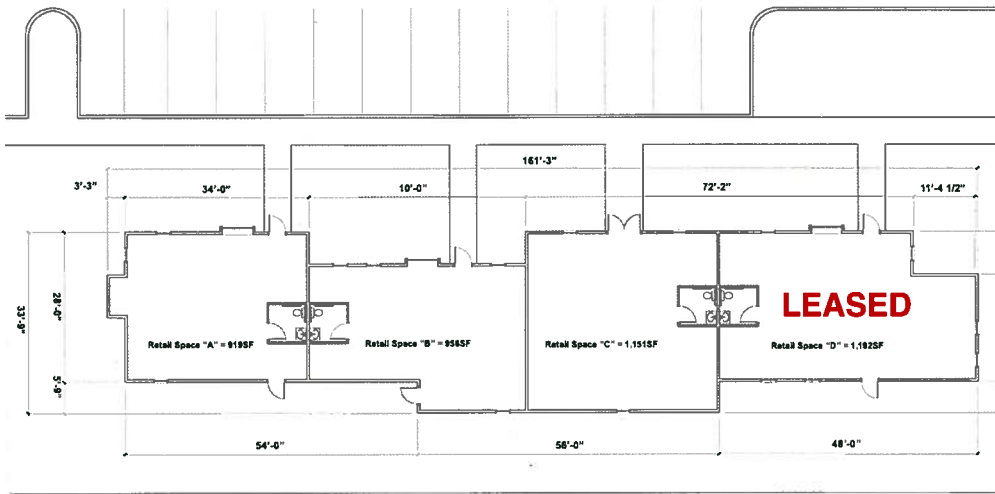


C

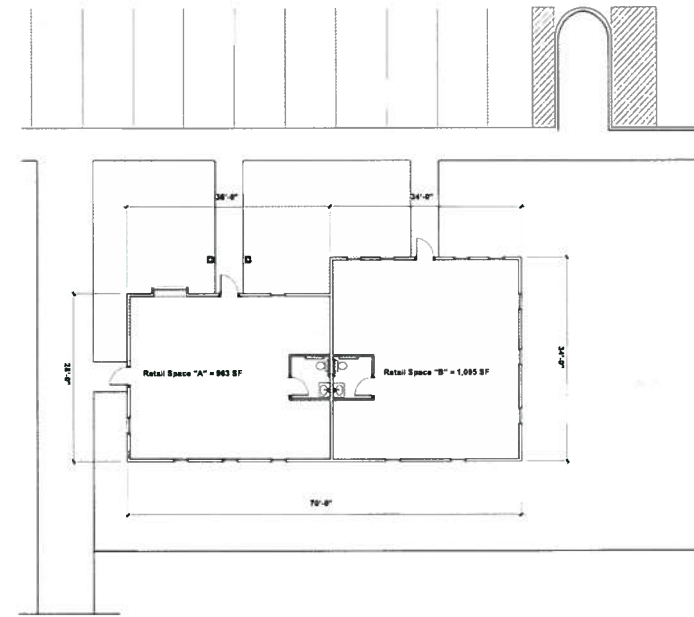


D

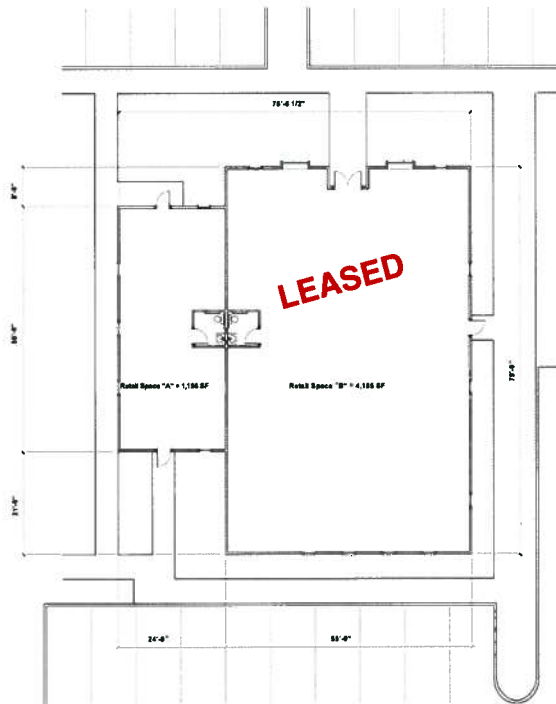




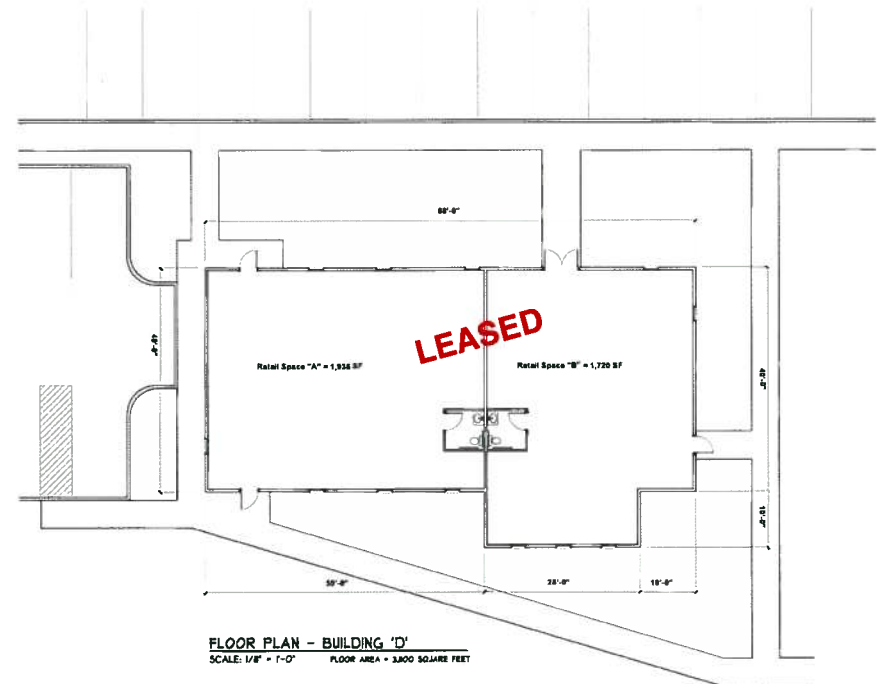
FLOOR PLAN - BUILDING 'A'
SCALE: 1/8" = 1'-0" FLOOR AREA = 4,136 SQUARE FEET



FLOOR PLAN - BUILDING 'B'
SCALE: 1/8" = 1'-0" FLOOR AREA = 2,14 SQUARE FEET



FLOOR PLAN - BUILDING 'C'
SCALE: 1/8" = 1'-0" FLOOR AREA = 4,146 SQUARE FEET



FLOOR PLAN - BUILDING 'D'
SCALE: 1/8" = 1'-0" FLOOR AREA = 3,800 SQUARE FEET

